

NEXT50: Let's Talk Community Survey

Summary of Key Learnings

June 2021

This survey went to LOCAL residents only.

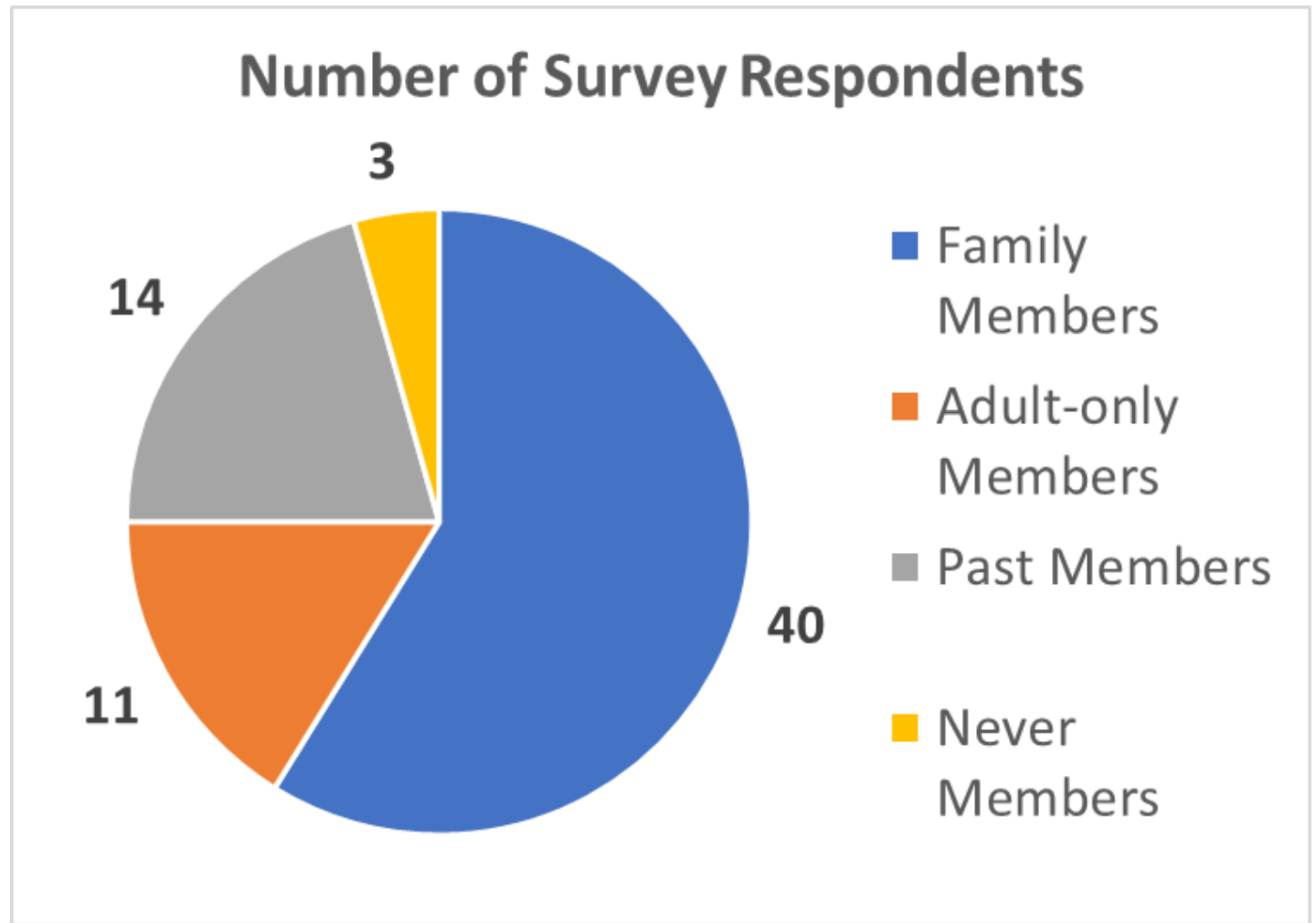
By Email - 186

- Current and Past members - 171
- Additional neighbours – 15
- 62 completes (33%) – **engaged residents**
- 67% did not respond.

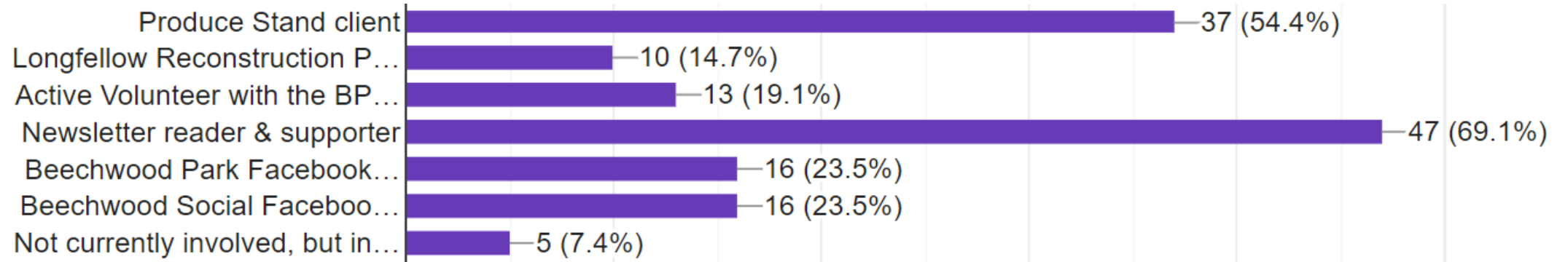
Paper questionnaires

- Catchment Neighbours - 182
- 5 completes (3%) – **engaged residents**
- 97% did not respond.

All survey participants are local; Associate Members were not included.

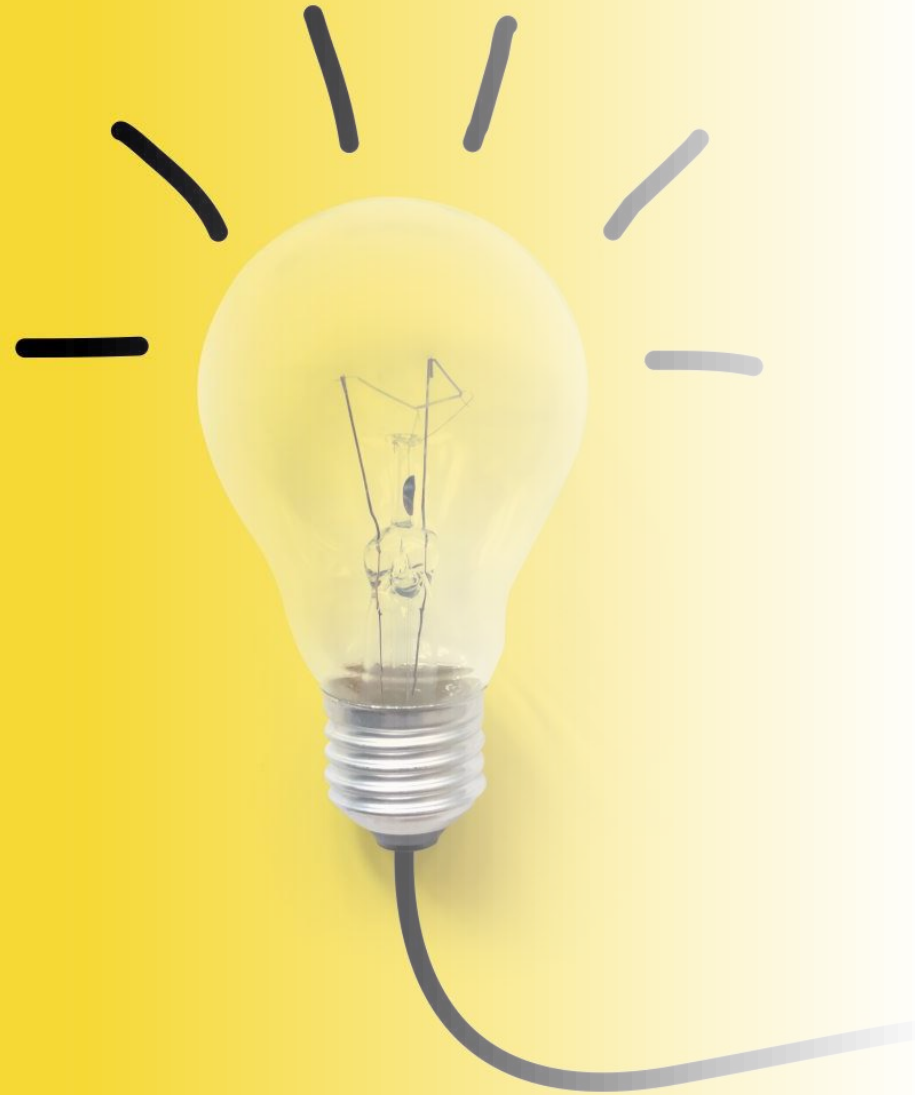


75% are current members



Engaged residents' - links to BPHA

- Newsletter and Produce Stand are dominant BPHA connection points.
- Facebook connected - almost 25%
- 20% of the survey participants are volunteers – **core supporters**.
- 5 people expressed interest in becoming involved with this project.



What engaged
Beechwood Park
residents want to
explore in detail.

In order of priority.

Expand the **Role of the BPHA** (Information & community programming) & **Update the website.**

Less than 20% support the status quo.

Expand the role of the BPHA to provide alerts/information to members regarding government initiatives (municipal/regional/provincial) that might affect our community. For example: tree removal policy, leaf pick-up, zoning changes, etc.)	60%
Facilitating neighbourhood activities that encourage physical & mental health for residents: e.g., walking groups, skating & other winter activities, block parties, book clubs, new neighbour welcome events, neighbour helping neighbour programs	60%
Updating the BPHA website to facilitate programming for neighbourhood: tool sharing, talent sharing, group buying for home services/repairs, etc.	50%
Look for ways that all the 10 Beechwoods could work together for mutual gain.	31%
No interest in any of these. Leave the role of the BPHA alone, let it continue to focus on running the Rec Centre and encouraging 'ad hoc' groups to address community issues as they arise. Status quo.	18%
Creation of sports leagues with other Beechwoods.	15%

Rec Centre Overall – Desired Improvements

Less than 25% support the status quo.

Making better use of the slope (hill); create open air amphitheatre for guest lectures, movie/karaoke nights, etc.	43%
Create play area for young children	42%
Adding Solar panels for energy and shade	37%
Improved bicycle parking	31%
Create a basketball court.	29%
Creation of waste management station.	28%
Outdoor kitchen in the Gazebo for group gatherings	26%
Creating small meeting/sitting spaces for members using low maintenance plants & dividers	23%
Create a pickleball court.	22%
Keep the current status quo.	22%
Improved accessibility for strollers, walkers, etc.)	20%
Use of retaining walls to create more useable space. (use of these walls for public art & message boards)	19%

Membership.

Less than 25% support the status quo.

Examine other approaches to attract more local membership.	47%
Establish a “community membership” for those households in the catchment who do not want to use the rec centre but want to support community programming	42%
Establish a two-tier system of membership: one fee for a “Family Membership” and a lower fee for an “Adult only/Grandparent-Membership.”	38%
support maintaining the status quo.	23%
Limit membership to locals only	14%

Landscaping.

Less than 30% support the status quo.

Plant low maintenance native species	48%
Creation of more shade using a combination of large trees, pergolas, solar panels, etc.	45%
Keep status quo.	29%
Use planters/trellises/low plants to create separate seating areas	23%
Perimeter planting along the property lines	19%
Install automatic watering system	5%

Main Building

Less than 40% support the status quo.

Add an awning on the street side for the Produce Market.	43%
status quo.	38%
Add solar panels for power and shade.	37%
Add a space for meetings, indoor activities, guest lectures	24%
Add space for more storage, for waste management.	16%
Enlarge the footprint of the current building.	14%
Make it two stories high. Potentially with 2nd story balcony on the Pool and Tennis court sides.	13%
Add a Kitchen for member use.	13%

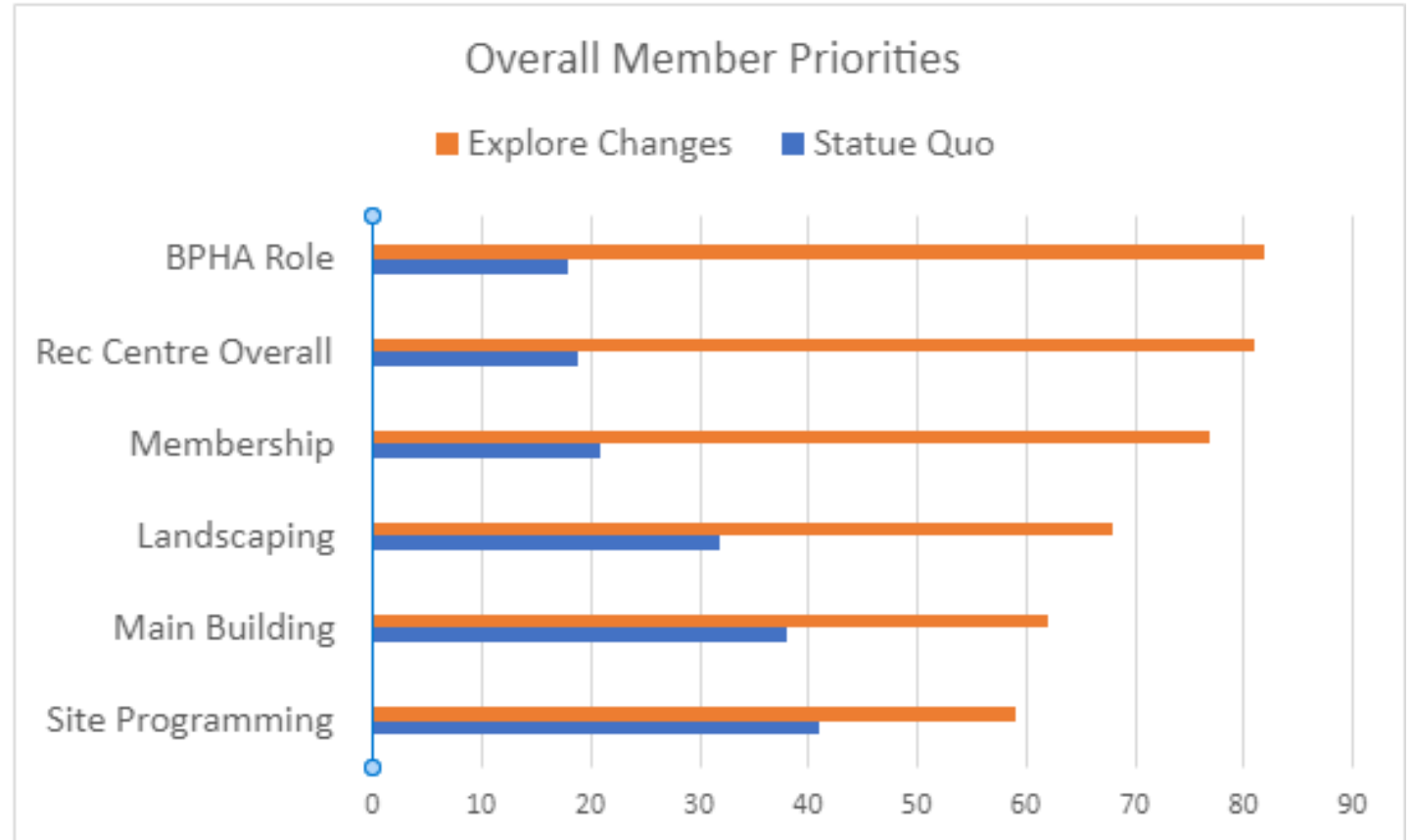
There is majority support for maintaining the current **on-site programming**.

Maintenance of on-site lessons for children & adults (Swim, tennis)	61%
Maintenance of a variety of on-site 'kids camps' & activities offered over the course of the summer.	60%
Adult and family social gatherings and potluck events	47%
Happy with the traditional offerings of lessons & camps, continue to change and manage these as required.	42%
Additional offerings like adult card games, chess/checkers, guest lectures.	24%

Each topic was covered in a set of questions. In each case fewer than 50% support the status quo and more than 50% want to explore one or more options in greater detail.

Huge interest in exploring changes to the **Role of the BPHA, the Rec Centre, and membership.**

Lower interest in changes to **landscaping, the main building changes**



The current and past local member mandate is to explore the supported ideas in detail.

Top Areas to Explore

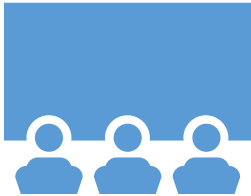
- **Change the Role of the BPHA**
 - Information & community programming
- **Update the website**
 - More community content
- **Explore different Membership Models**
 - Community membership
 - Family and Adult-only
 - Very strong support for Associate Membership (Local-only <15%)

Other Areas to Explore

- Ideas for Main Building
- Plant native species, more shade, play area for children
- Better use of the slope and adjacent green space
- Solar panels, better bike racks
- Basketball court

All single-mention verbatims are included in the companion Word document.

Next Steps



Share survey results with all survey participants, the Board, and on the NEXT50 website.



Invite community members to build on these ideas.



Create a final report for Members and the Board this Fall.